

# Crew Accommodations

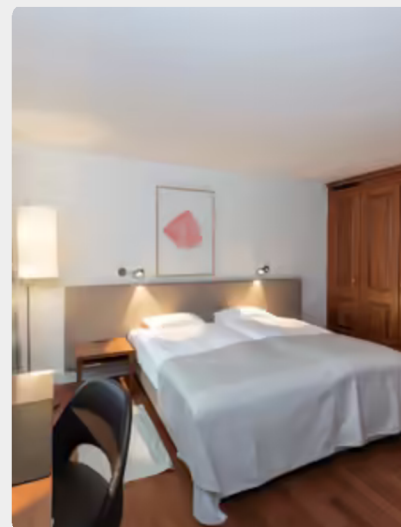
## Hotel Einstein \*\*\*\* SUP

[www.einstein.ch](http://www.einstein.ch)

First class hotel located in the city center of St. Gallen with a wellness and fitness area.

Distance: ca. 15 minutes  
Wi-Fi: included  
Breakfast: not included (CHF 25.-)  
SPA/Fitness: included

Single room (Economy): CHF 170.- (per night) CHF 120.- (day use, until 6 p.m.)  
Comfort room: CHF 200.- (per night) CHF 160.- (day use, until 6 p.m.)



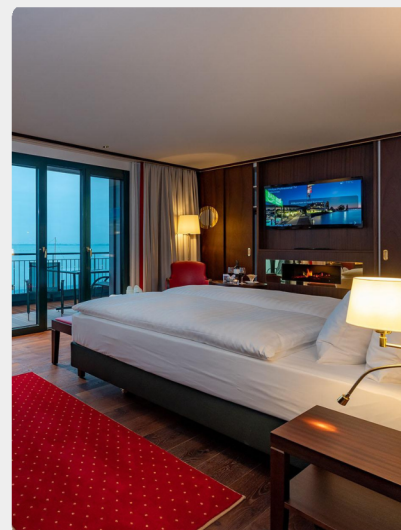
## Bad Horn Hotel & Spa \*\*\*\*

[www.badhorn.ch](http://www.badhorn.ch)

The hotel Bad Horn is located directly at the Lake of Constance.

Distance: ca. 15 minutes  
Wi-Fi: included  
Breakfast: included  
SPA: included

Single room (streetside): CHF 135.- (per night) no day room available  
Single room (lakeside): CHF 185.- (per night) no day room available



## Hotel Heiden \*\*\*\*

[www.hotelheiden.ch](http://www.hotelheiden.ch)

Located up on the hills with a nice view on the Lake Constance.

Distance: 20 minutes  
Wi-Fi: included  
Breakfast: included  
SPA: included

Single room: CHF 190.- (per night) CHF 115.- (day use)



# Crew Accommodations

## Oberwaid \*\*\*\* Superior Hotel

[www.oberwaid.ch](http://www.oberwaid.ch)

This exquisite hotel in St.Gallen will be marked by the best in traditional resort amenities & soothing spa treatments.

Distance: 20 minutes  
Wi-Fi: included  
Breakfast: included  
SPA: included

Double room (single use): CHF 185.- (per night), day use: CHF 135.-



## ibis Styles St.Margrethen Bodensee

[www.all.accor.com](http://www.all.accor.com)

The affordable design of hotel ibis Styles invites you with an open space concept.

Distance: 10 minutes  
Wi-Fi: included  
Breakfast: not included / incl. breakfast CHF 20.-  
SPA: no SPA available

Double room (for single use) 15% of daily rate

Double room (for single use, day use) CHF 99.-



## Hotel Eastside \*\*\*

[www.hoteleastsided.ch](http://www.hoteleastsided.ch)

The business hotel is located in St.Gallen near the city center.

Distance: 20 minutes  
Wi-Fi: included  
Breakfast: not included / incl. breakfast CHF 18.-  
Fitness: included, no SPA available

Double room (Mo–So): CHF 138.- (incl. breakfast) single use

Double room (Mo–So): CHF 120.- (excl. breakfast) single use



# Crew Accommodations

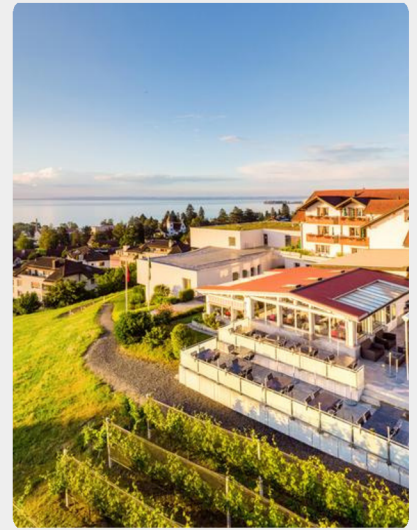
## Best Western Hotel Rebstock

[www.rebstock.ch](http://www.rebstock.ch)

This Best Western hotel is located in Rorschacherberg up on the hills.

Distance: 8 minutes  
 Wi-Fi: included  
 Breakfast: included  
 SPA: no SPA available

Single room (economy): CHF 129.- (per night) no day room available  
 Single room (deluxe): CHF 147.- (per night) no day room available



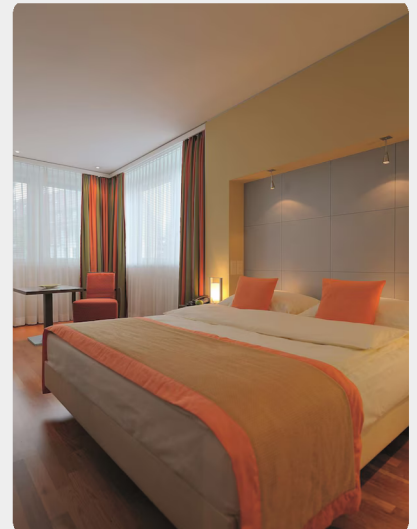
## Hotel Radisson Blu \*\*\* Business Hotel

[www.radissonblu.com/hotel-stgallen](http://www.radissonblu.com/hotel-stgallen)

The Radisson Blu hotel is located in the city center and has its own casino.

Distance: 15 minutes  
 Wi-Fi: included  
 Breakfast: included  
 SPA: not included

Single room: CHF 215.- (per night) CHF 150.- (day use)



## Hotel Schloss Wartegg

[www.wartegg.ch](http://www.wartegg.ch)

This bio hotel is located in Rorschacherberg with a view on the Lake Constance.

Distance: 5 minutes  
 Wi-Fi: included  
 Breakfast: included  
 SPA: included

Single room (So-Fr): CHF 135.- (per night) CHF 95.- (day use, until 5 p.m.)  
 Single room (Fr-So): CHF 155.- (per night) CHF 120.- (day use, until 5 p.m.)  
 Double room for single use additional CHF 95.- CHF



# Crew Accommodations

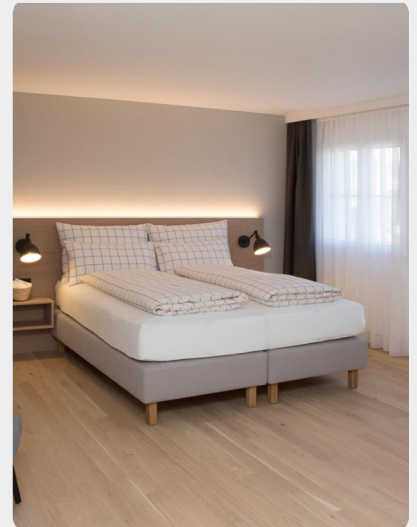
## Hotel Forum Widnau

[www.forum-hotel.ch](http://www.forum-hotel.ch)

This charming business hotel is located nearby Airport Altenrhein and Vorarlberg.

Distance: 20 minutes  
 Wi-Fi: included  
 Breakfast: included  
 SPA: no SPA available

Double room (for singel use): CHF 145.- (per night) no day room available



# Crew Transportation

## Crew Transportation

For crew transportation please contact our C-Office team:

People's Airport St. Gallen Altenrhein LSZR  
 Flughafenstrasse 11  
 CH - 9423 Altenrhein  
 Phone +41 71 858 51 65  
[groundservices@peoples.ch](mailto:groundservices@peoples.ch)

